

WHAT ARE MY OPTIONS?

BUILD VS. SUBSCRIBE

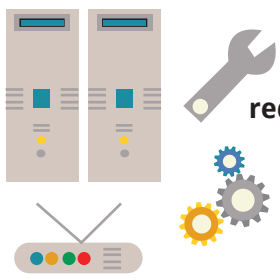


high risk
requires more IT resources
time consuming
high development costs
requires long term internal maintenance commitment

low risk
little to no IT support needed
fixed monthly price
lower total cost of ownership
maintenance and support provided



LICENSED VS. CLOUD



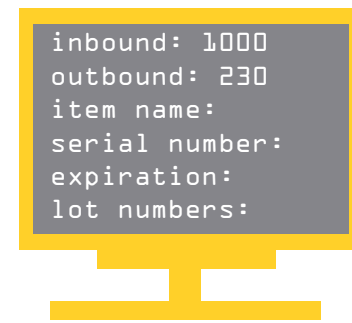
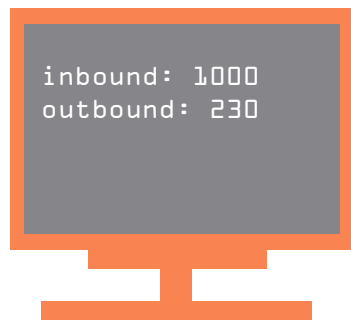
costs time and money
effort required to support
extensive amount of time to implement
requires hardware, database, software, and security
requires maintenance of a robust security model

more efficient
support included
easy to set up
no software or hardware to buy, and security provided



INVENTORY CONTROL VS. INVENTORY TRACKING

Allows you to track what items are coming in and going out.



Allows you to track more than just what items are coming and going. You have access to lot numbers, serial numbers, expiration dates, etc.

MANUAL ENTRY VS. BARCODE SCANNING

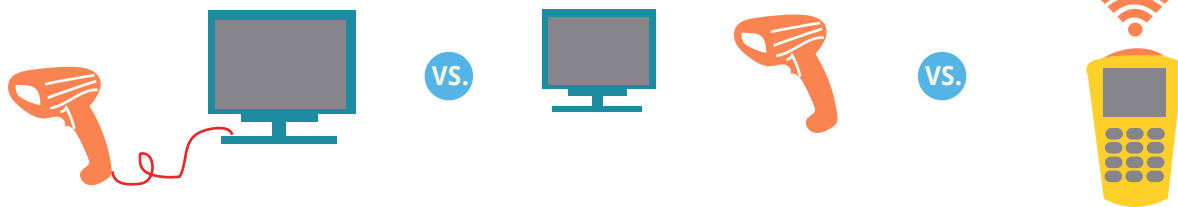


This is beneficial if you only have a few items to upload to a new system.

This is beneficial when dealing with many items and need to access insightful information. This helps you avoid transcription mistakes and other errors.



WEDGE, DATA CAPTURE, WIFI



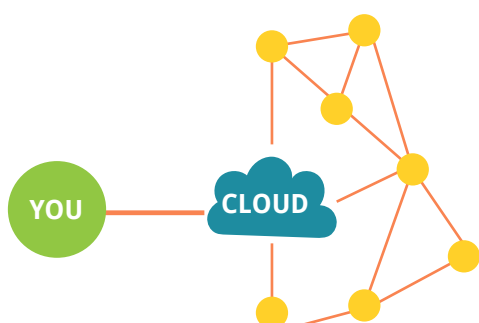
Using barcode scanning means that you can capture information on a wedge. This version means that you will be attached to your computer. If you use a data capture device, it allows you to scan anywhere, however you will still need to use a computer to update your data. If you use wifi with a barcode scanning device, then you can scan anywhere, in real-time.

AUTOMATIC REPLAN vs NO REPLAN



Based upon your parameters, the system will calculate your inventory requirements to your supplier. This will save you both time and money.

ADAPTERS and API's



If you need to push or pull information from other systems, APIs can save you a large amount of time and money. Why re-key data you already have?